



Captain Cook Salt Project Newfoundland, Canada

**Patrick Laracy, President & CEO
Vulcan Minerals Inc.**



Forward Looking Statements



This presentation may include “forward looking statements”. All statements, other than statements of historical fact, included herein, including without limitation, statements regarding exploration results, future plans, and objectives of Vulcan Minerals Inc. and Red Moon Resources Inc. are forward looking statements that involve risks and uncertainties. There can be no assurance that such statements will prove to be accurate and actual results and future events could differ materially from those anticipated in such statements.



Vulcan-Red Moon Subsidiary



Vulcan Minerals - Listed on Toronto Stock Exchange (Venture)

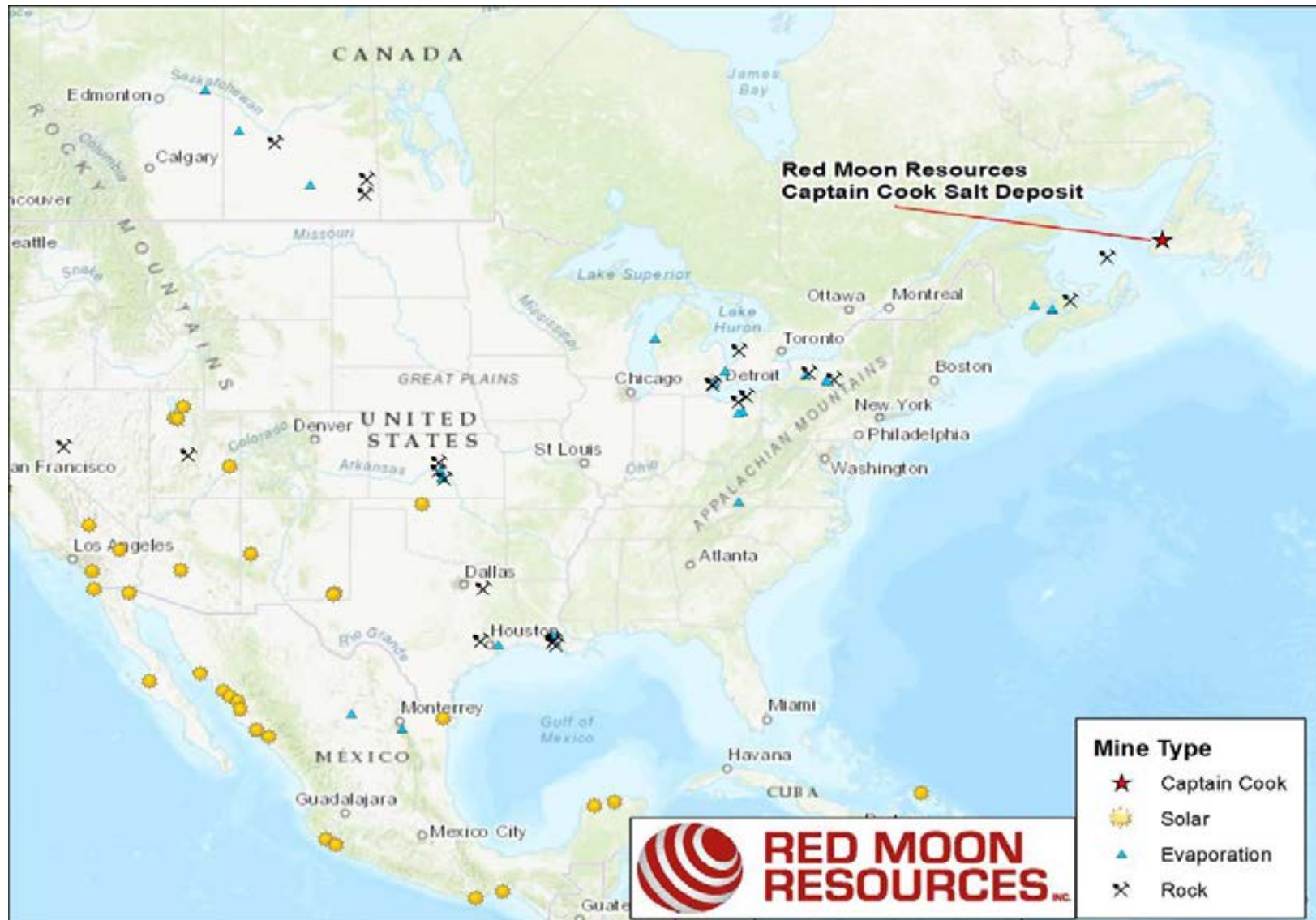
- Mineral exploration and development company focussed on projects in Newfoundland and Labrador, Canada

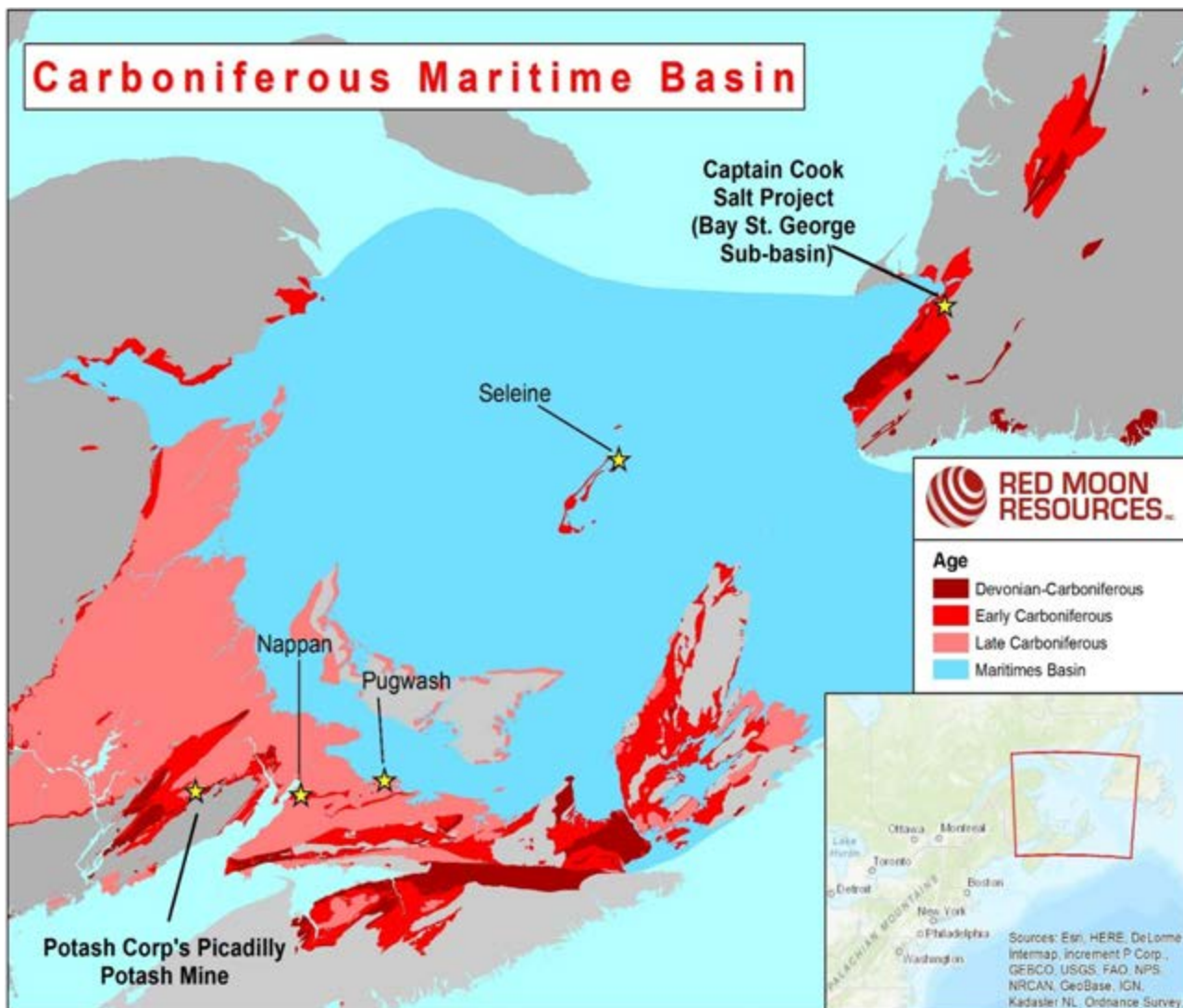
Red Moon – Listed on Toronto Stock Exchange (Venture)

- A subsidiary of Vulcan (67% ownership)
- Industrial minerals exploration and development company (gypsum, salt, nepheline, silica)

- Geology - discovery - resource
- Infrastructure - endowment
- Development - feasibility

Project Location





A Salt Mining Region

- Seleine
1982 - present
2.0 Mt/y
- Pugwash
1959 - present
1.8 Mt/y
- Nappan
1947 - present
100,000 t/y

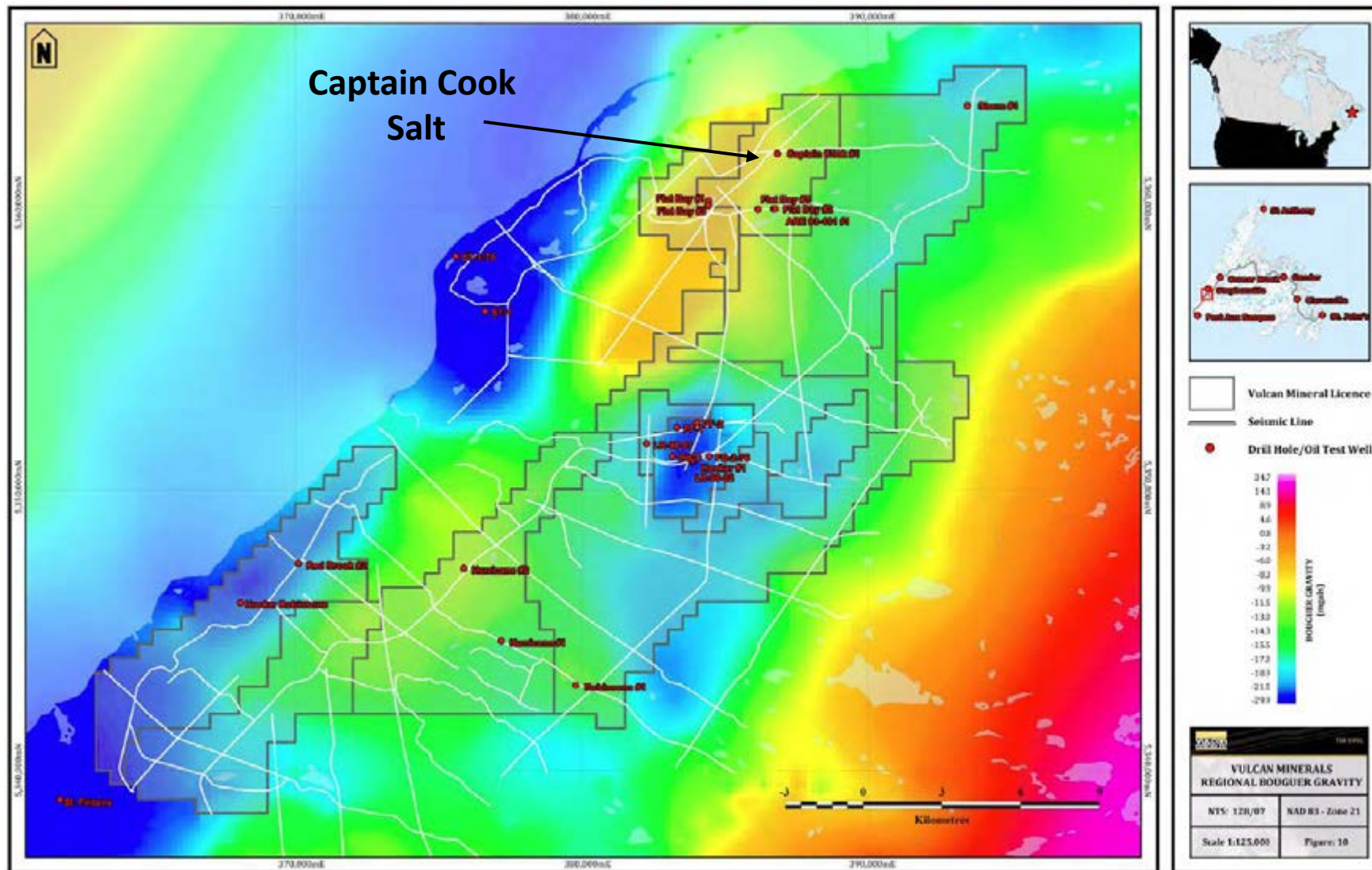
Evaporite Stratigraphy Maritimes Basin

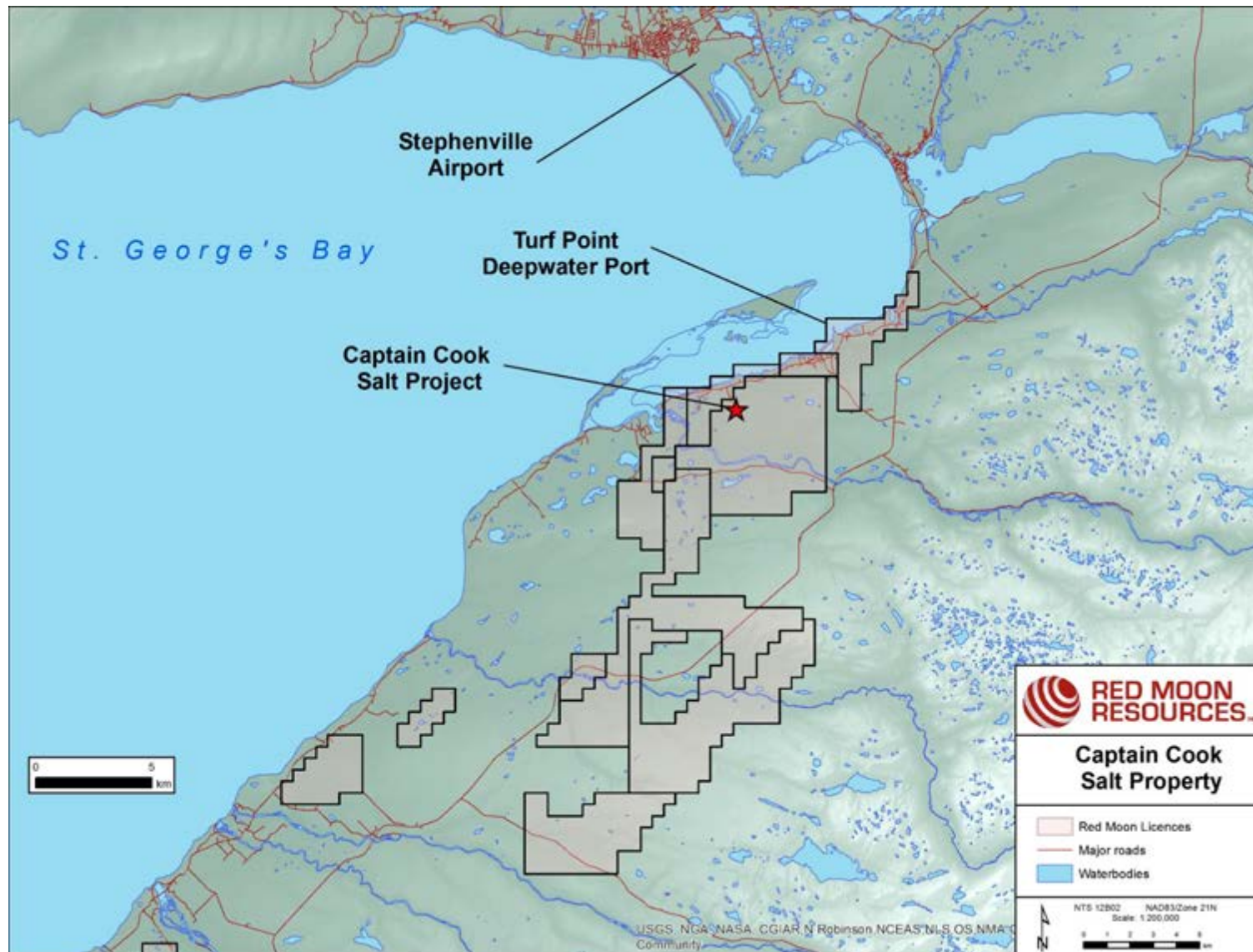


Moncton Basin

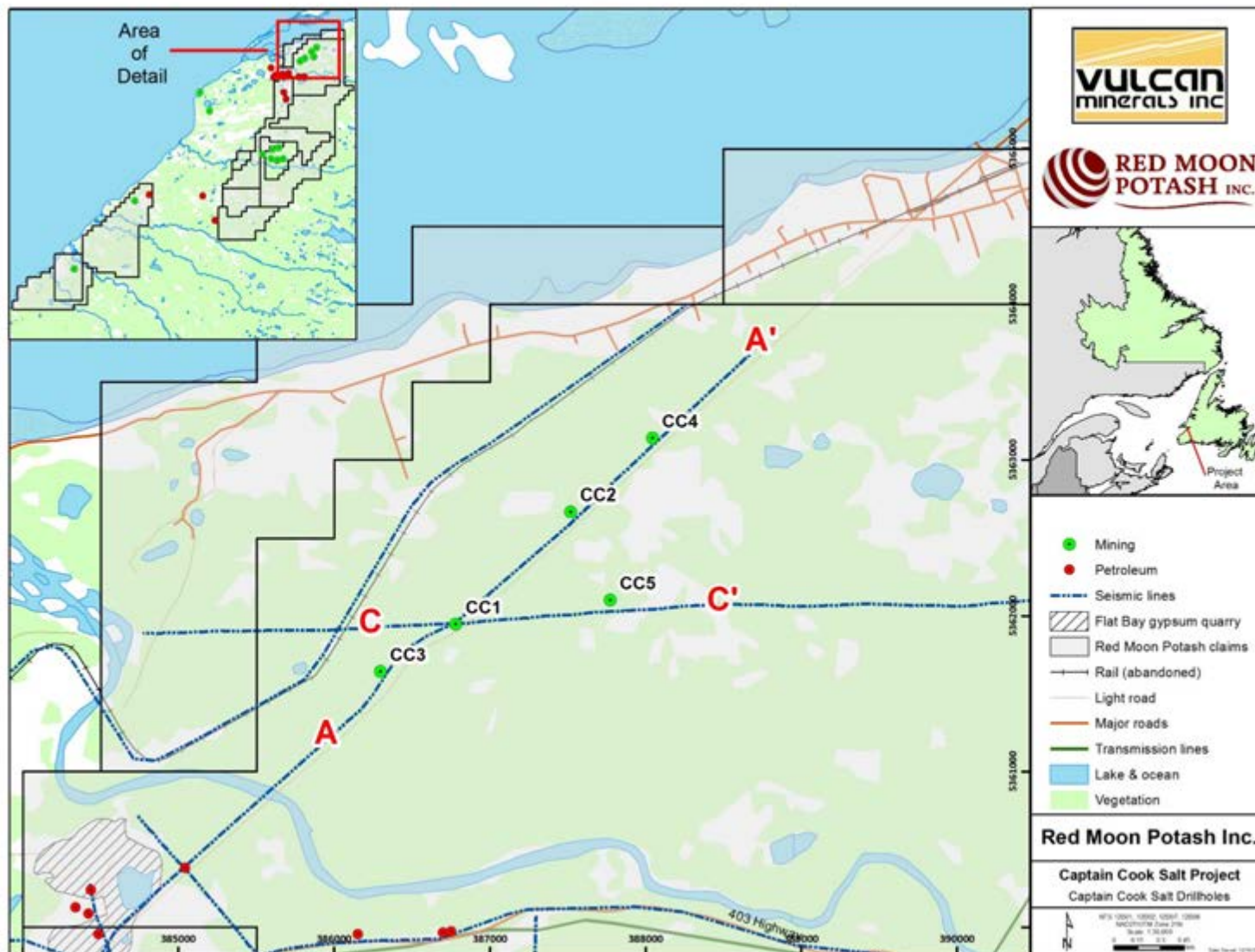
Bay St. George Basin

Age	Group	Formation	Member	Lithology			Member	Formation	Group				
Namurian	Mabou	Undivided Units		Red to grey conglomerate; red and green mudstone and sandstone				Searston	Barachois				
Visean	Windsor	Clover Hill		Grey-green claystone			Grey Shale	Robinsons River	Codroy				
			Penobsquis Salt	Grey to pale orange halite									
			Upper Anhydrite	Dark greyish-blue massive anhydrite									
		Cassidy Lake	Upper Halite	Coarse	Argillaceous, grey to pale orange halite		Undifferentiated Upper Halite			Upper Halite			
				Laminated	Halite and sylvinite laminae of greyish-green clay								
				Sylvinite	Low-grade sylvinite and carnallite								
				Banded	Orange halite, reddish-purple halite and sylvinite								
			Ore Zone	High-grade sylvinite associated with medium to coarse crystalline pale grey halite		Potash Zone Variable Thickness							
				Middle Halite	Red-brown					Red-brown argillaceous halite		Undifferentiated Middle Halite	Middle Halite
					Grey-green					Grey-green argillaceous halite			
			Basal Halite	Clean to anhydritic halite			Basal Halite						
			Upperton		Massive to finely laminated anhydrite					Anhydrite	Codroy Road		
			Macumber		Thinly bedded to laminated limestone					Limestone	Ship Cove		
		Tournaisian	Sussex	Hillsborough		Conglomerates, sandstone; minor mudstone				Fischells Conglomerate	Spout Falls	Anguille	

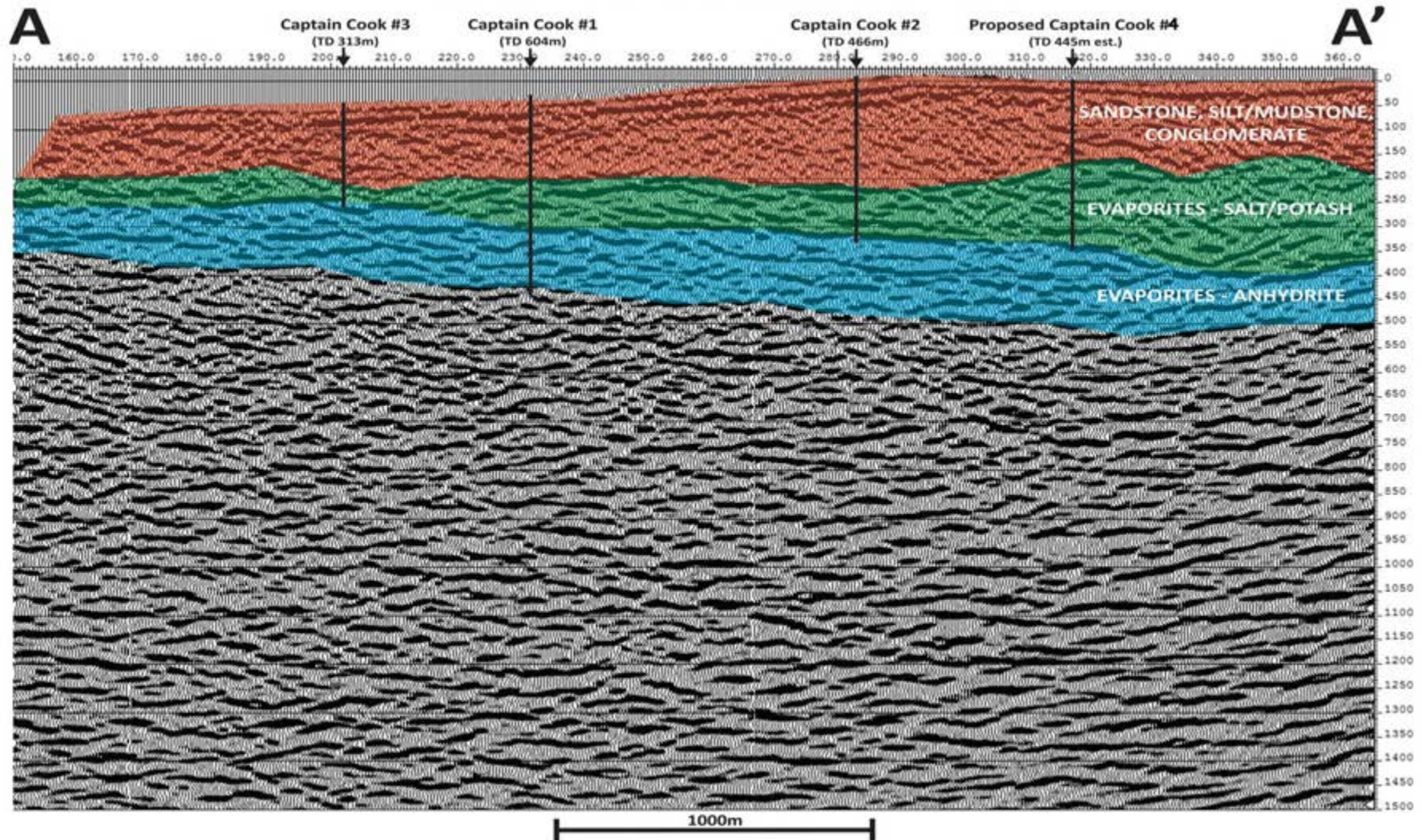




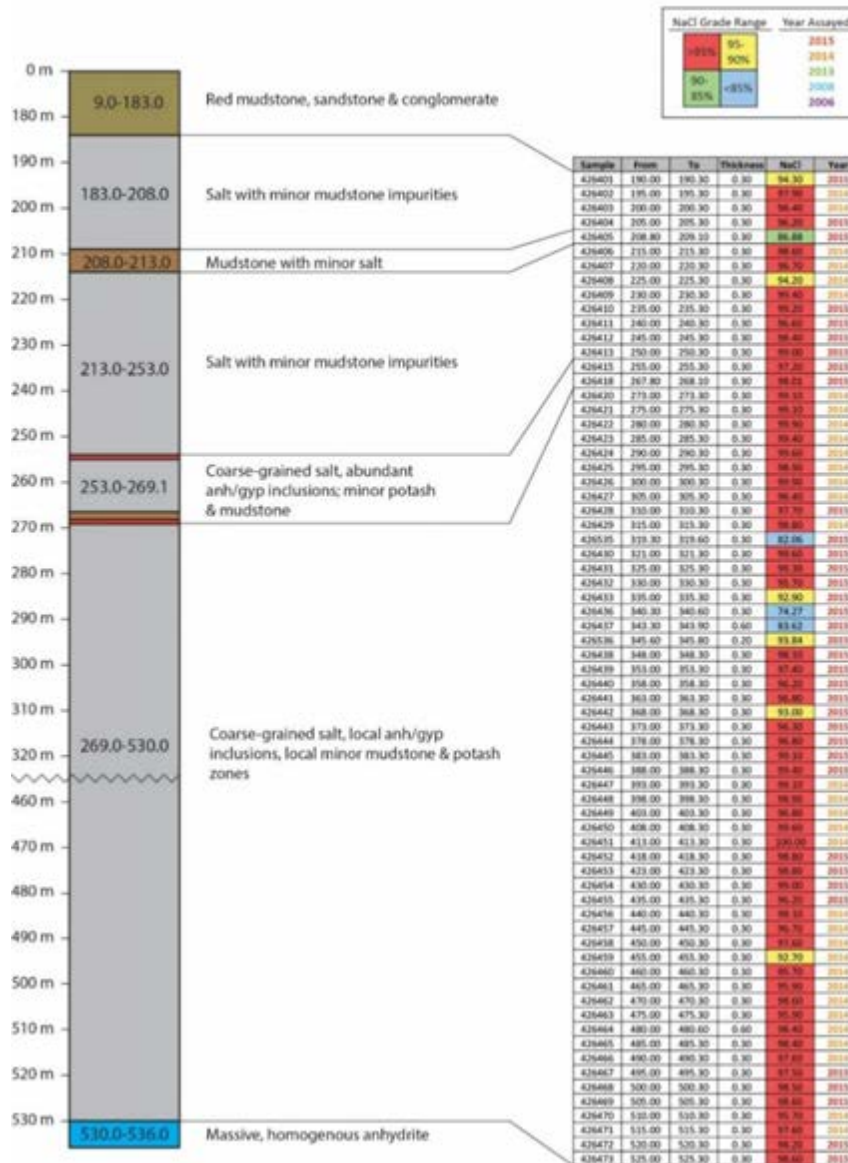
Drill Location Map



SEISMIC LINE SCHEMATIC GEOLOGICAL INTERPRETATION/CROSS SECTION



Captain Cook #4 Salt Section



Captain Cook #1 Core



Captain Cook #1 Core



NaCl lower cut-off (%)	Volume (m ³)	Tonnes (million)	Density (kg/m ³)	NaCl (%)	Tonnes <i>in-situ</i> (million)
88	682,000,000	1,473	2.16	95.3	1,405
89	677,000,000	1,462	2.16	95.4	1,395
90	672,000,000	1,451	2.16	95.4	1,385
91	653,000,000	1,410	2.16	95.6	1,348
92	602,000,000	1,301	2.16	95.9	1,248
93	557,000,000	1,203	2.16	96.2	1,157
94	499,000,000	1,078	2.16	96.5	1,040
95	420,000,000	908	2.16	96.9	880
96	304,000,000	657	2.16	97.4	640
97	190,000,000	410	2.16	97.9	401
98	71,000,000	154	2.16	98.6	152
99	17,000,000	37	2.16	99.3	37

Note 1: Mineral resources are not mineral reserves and do not have demonstrated economic viability. There is no guarantee that all or any part of the mineral resource will be converted into a mineral reserve.

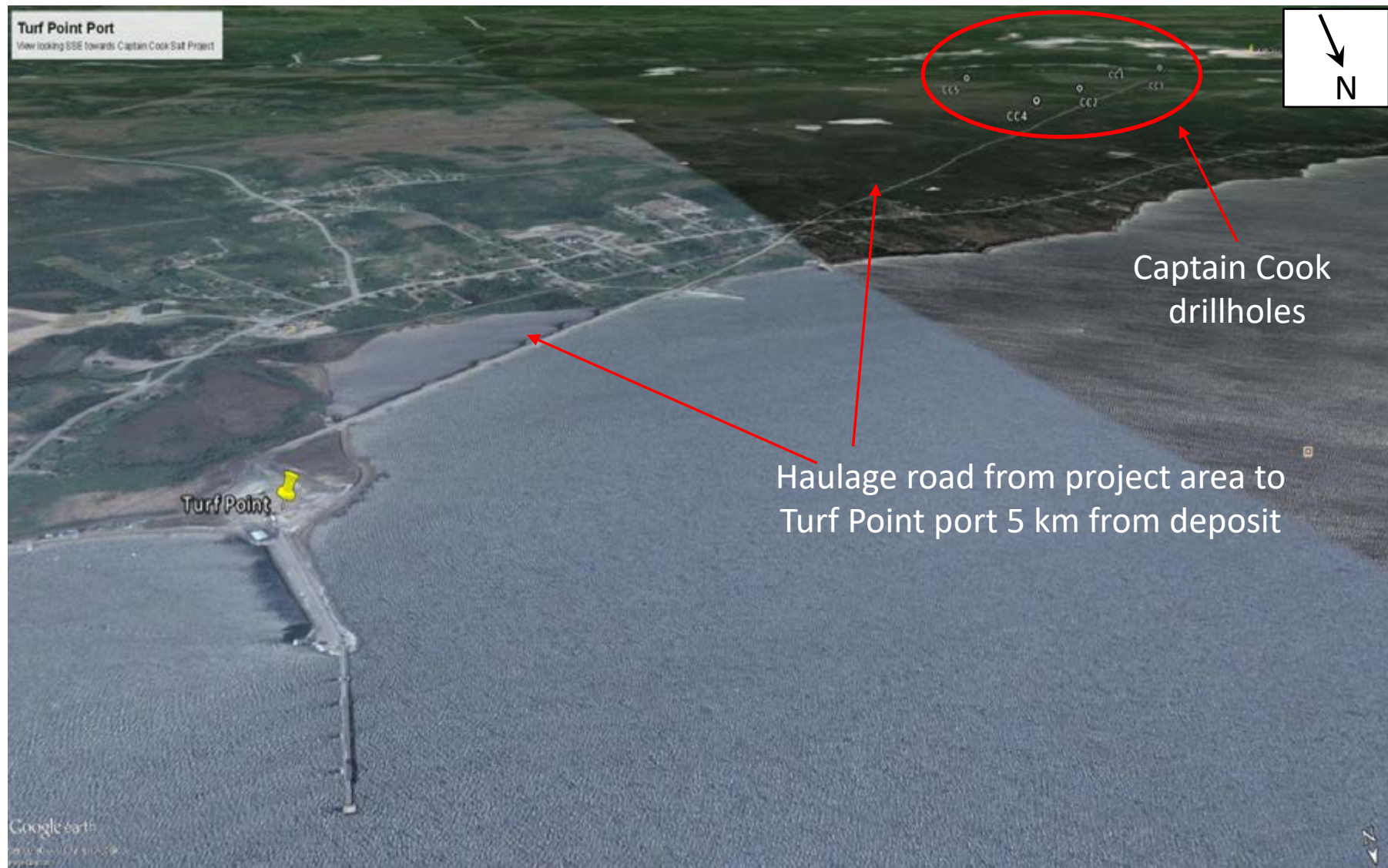
Note 2: The quantity of reported inferred resource in these estimations are uncertain in nature and there has been insufficient exploration to define these inferred resources as an indicated or measured mineral resource, and it is uncertain if further exploration will result in upgrading them to an indicated or measured resource category.

Note 3: The estimate of mineral resources may be materially affected by geology, environment, permitting, legal, title, taxation, socio-political, marketing or other relevant issues.

Note 4: Tonnes have been rounded to the nearest 1,000,000 (numbers may not add up due to rounding).

- Nearby deep water ports
- Airport within 20 minutes of property (Stephenville)
- TransCanada highway and multitude of secondary roads across property
- Hydro power line crosses property
- Mining-friendly jurisdiction
- Skilled workforce with mining experience in nearby communities
- Brownfield site – previous gypsum surface mining
- Proximity to markets

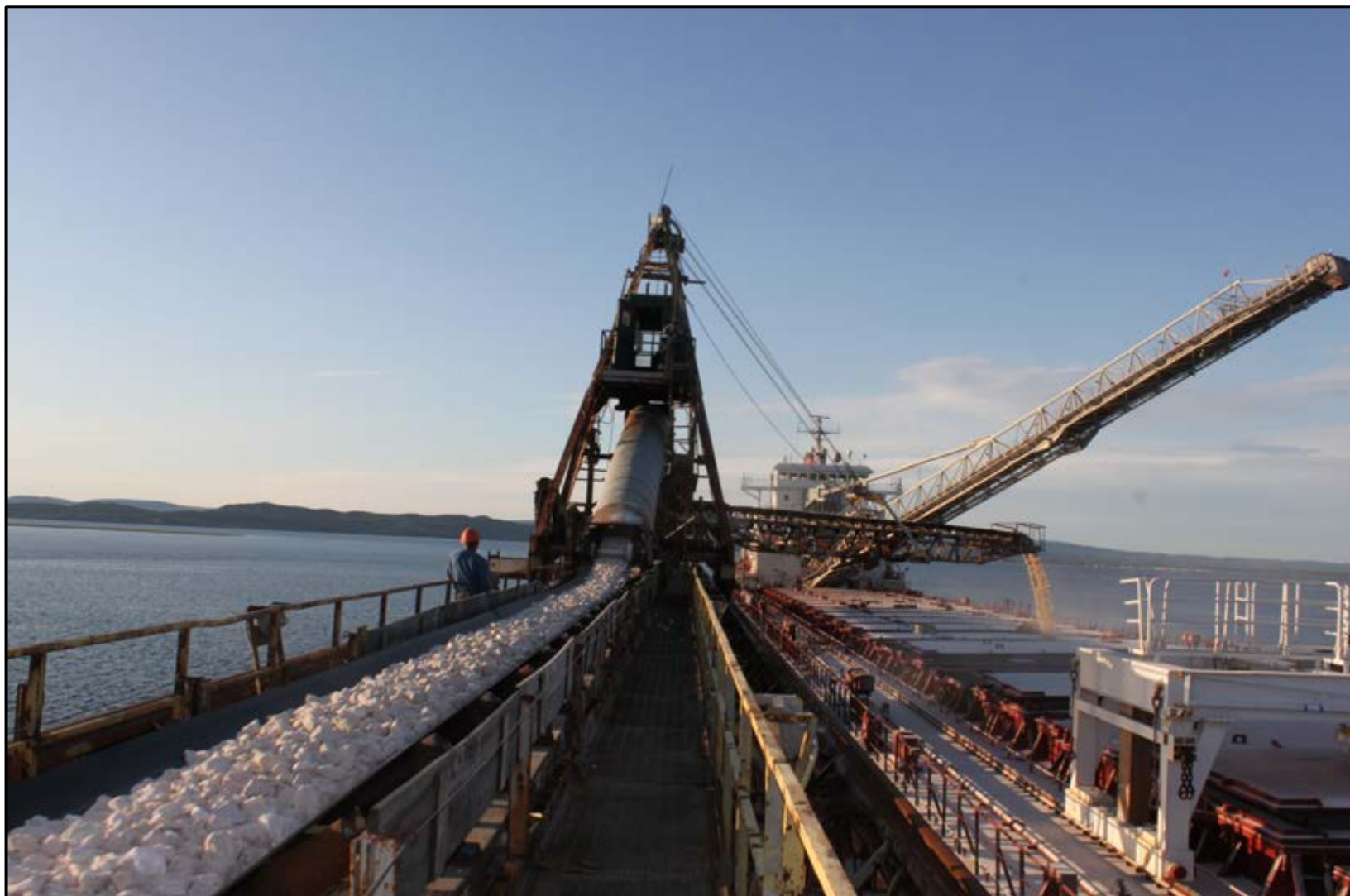




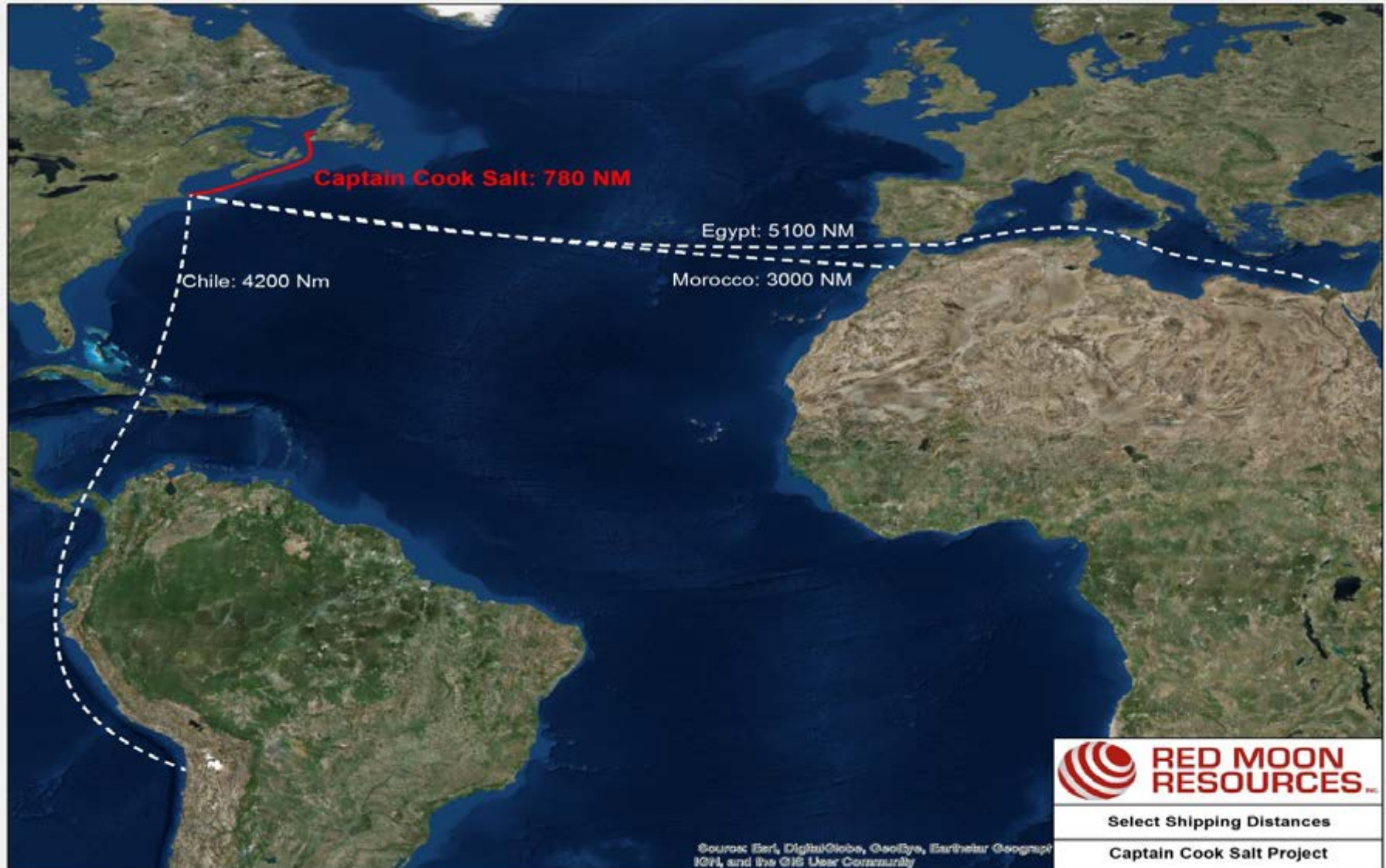




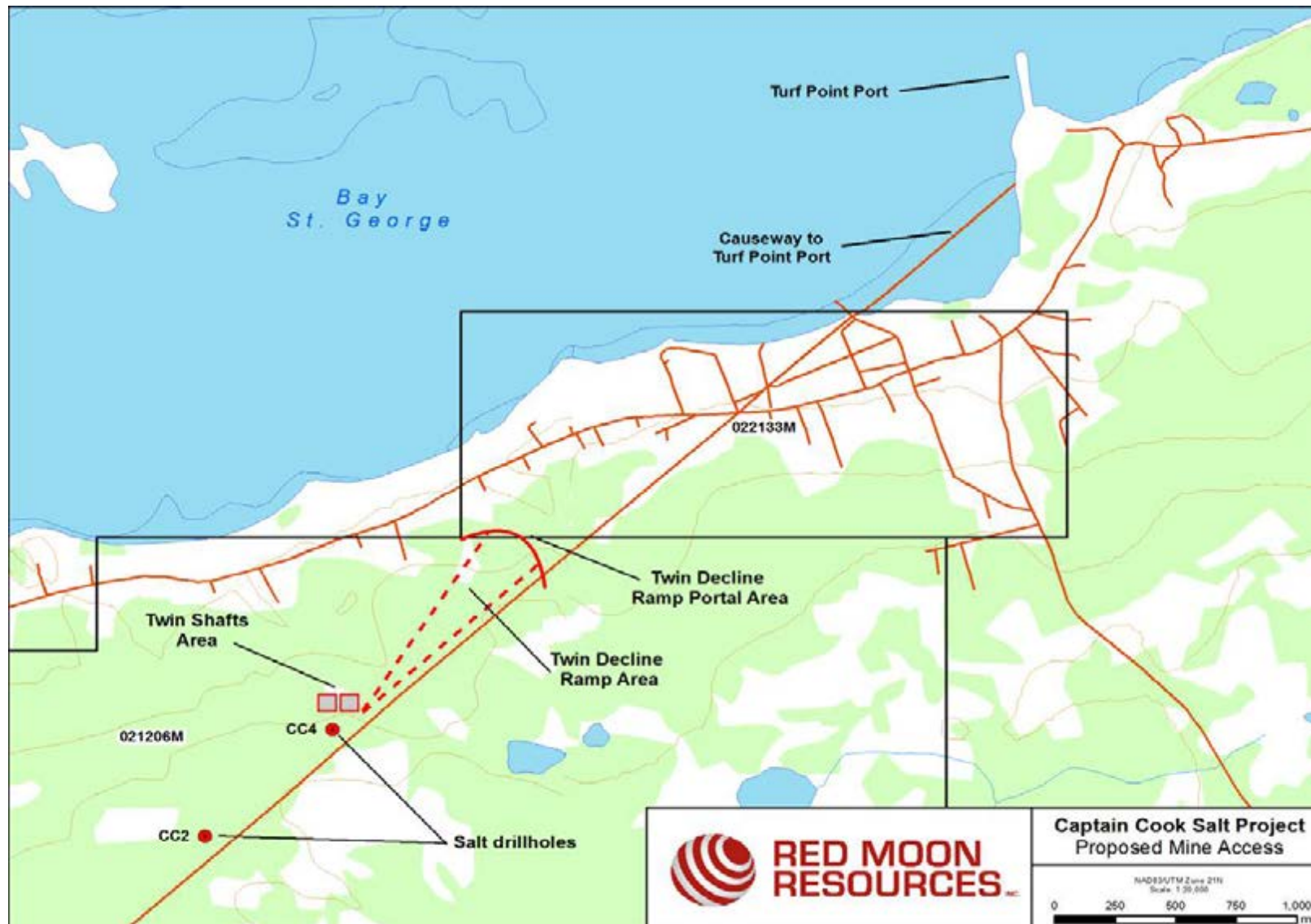
Loading Gypsum



Shipping Distances



Potential Mine Access Shaft or Decline





Component	Month											
	1	2	3	4	5	6	7	8	9	10	11	12
Project Assessment												
- site visit & data inventory												
Geology & QAQC												
- mineral resource/reserve estimation												
Marketing Study												
- review & strategy												
Drilling												
- 2-3 drillholes												
- resource definition												
- engineering sampling & analysis												
Infrastructure Assessment												
Transportation/Loading facility												
Mine Planning												
- design (shaft/decline)												
- process flowsheet												
- reclamation planning												
Environmental: Risks & Mitigation												
Economic Analysis												
Project Management: Leader												
- report writing, review, finalization												
Project Owner: Red Moon management, material inputs, permitting & project facilitation												
SubTotal												
Contingency @ 15%												
Grand Total												

- Feasibility funding Q3 2018
- Feasibility completed by Q3 2019
- Mine permitting and construction 2019-2022
- Production commences early 2022
- Ramp up production to capacity of 2.1 million tonnes per year



Rowland Howe

Mining Engineer – formerly of
Compass Minerals who managed
the expansion of Goderich into the
world's largest salt mine



Bob Kelly

Former VP Teck Resources,
Mine Manager Iron Ore Co and
Construction Manager for Inco